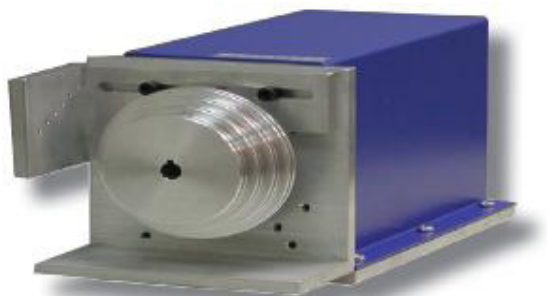




AT2 Servo Positioning Throttle Actuator

2-1

Dynamometer System

**Features:**

- Permanent Magnet DC Servo Motor
- Reduction Gearbox
- Servo Potentiometer

Applications:**Description:**

The AT2 is a Throttle Actuator, driven by an enclosed DC servo motor, and is part of the Dynamometer and Throttle control system. The actuator provides performance suitable for applications ranging from small two-stroke engines up to heavy diesels and racing engines.

Position feedback is provided by the internally mounted servo potentiometer.

The direct coupling of the potentiometer to the output shaft ensures accuracy.

The unit is easy to be installed with one electrical connector and the throttle cable.

Throttle cables are separately available for various fittings.

The AT2 can be mounted in any plane. With more engines moving to " Fly By Wire " throttle control, the AT2 can also be used to control the vehicle's throttle potentiometer directly.

Adaptation plates can be made for your particular application if necessary.



AT2 Servo Positioning Throttle Actuator

Specification:

- At2-N1 Throttle Actuator
 - 15 N-m Rotation Torque Capability
 - 0° ~ 180° In 250 mSec
 - Total Weight: 12 Kg
 - Dimensions: 15" × 6" × 6"
- Actuator Model and Option
 - Model At2-N1: Throttle Actuator
 - Model At2-SE: Engine Dynamometer Throttle Actuator With Stand
 - Model At2-SC: Bike Chassis Dynamometer Throttle Actuator With Stand
 - Model At2-C1XX: Cable with Length XX Meter



2-1

Dynamometer System